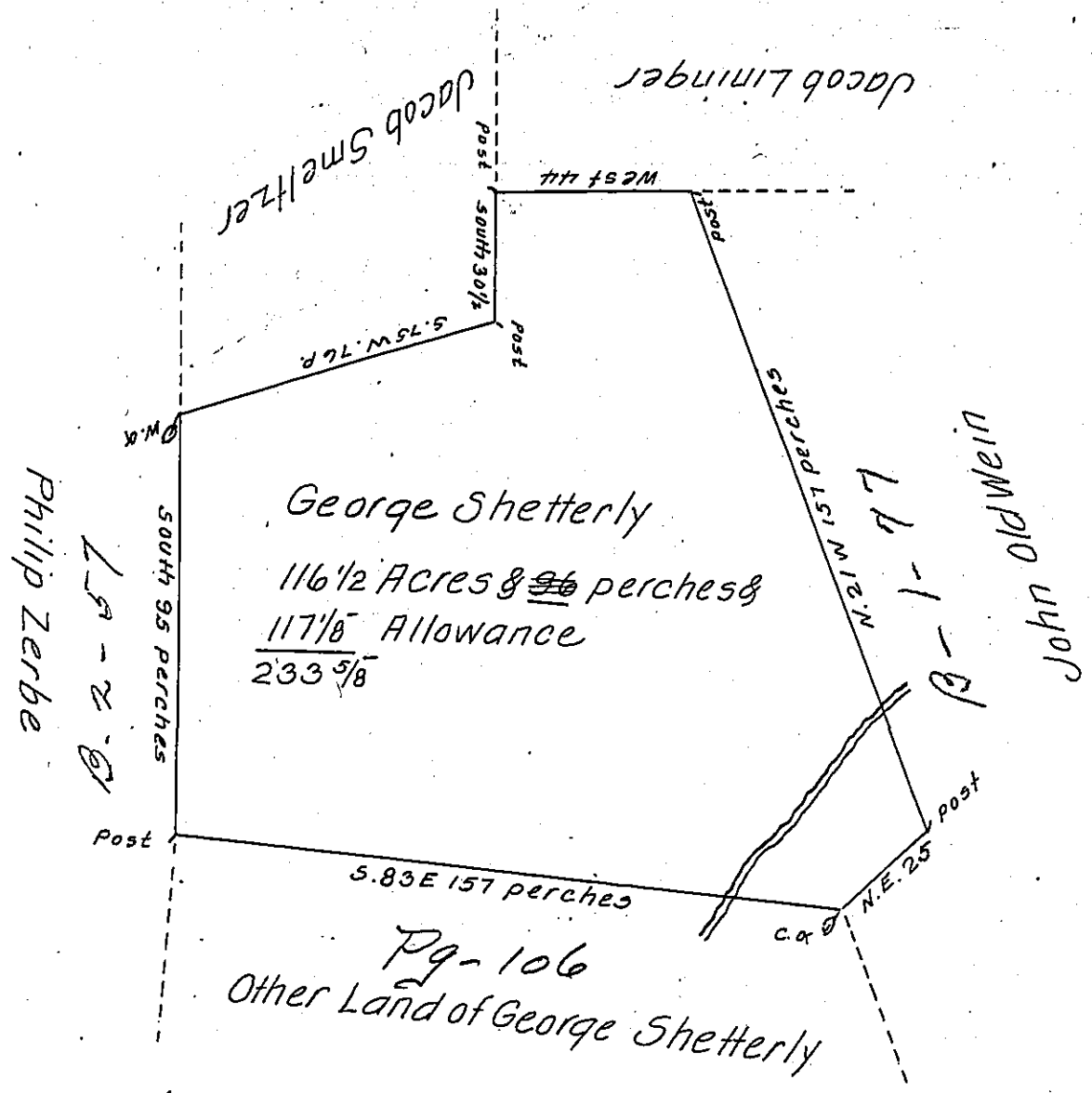


FORM NO. 1.

95
103 1/2
198 1/2



By Virtue of a Warrant Dated the first day of November 1784. Surveyed the 7th day of April 1785 To George Shetterly the above Described Tract of Land situate in pine Grove Township Berks County. Containing 116 Acres and 96 perches and the Allowance of six & Cent for Roads &c.

To John Lukens Esquire } Thomas Clark -
Surveyor General of Pennsylvania }

IN TESTIMONY that the above is a copy of the original remaining on file in the Department of Internal Affairs of Pennsylvania, made conformably to an Act of Assembly approved the 16th day of February, 1833, I have hereunto set my Hand and caused the Seal of said Department to be affixed at Harrisburg, this twenty fifth day of October 1906

Edward Brown
Secretary of Internal Affairs.